

USER GUIDE

ReSound Essence ITE, ITC & CIC

ES50, ES50-D, ES50-P, ES50-DP,
ES30, ES30-D, ES30-P, ES30-DP
ES10, ES10-P



RESOUND Essence IN-THE-EAR HEARING INSTRUMENTS PERSONAL HEARING SYSTEM

Congratulations on the purchase of your new fully-digital GN ReSound hearing instrument!

This booklet describes the features available for the custom fit hearing instrument models in the ReSound Essence product line. The available options depend on the hearing instrument model; your hearing care professional will highlight the features of your particular hearing instrument.

GN ReSound's advanced technology and customized programmes, selected by your hearing care professional, will offer you the best possible hearing solution to maximize listening situations in your family life, your professional life and your social life.

Your hearing instrument has been adjusted for your individual hearing loss. Please familiarize yourself with the information in this booklet. Proper understanding and use of your new GN ReSound hearing instrument will allow you to derive maximum hearing benefit.

This instruction manual covers the following ReSound Essence custom products: ES50, ES50-D, ES50-P, ES50-DP, ES30, ES30-D, ES30-P, ES30-DP, ES10 and ES10-P

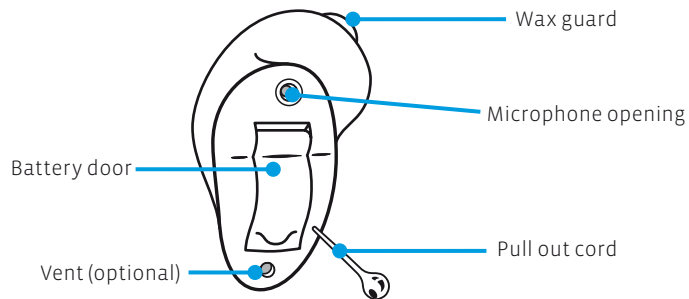
ReSound Essence is a trademark of GN ReSound A/S.

This booklet & your instrument

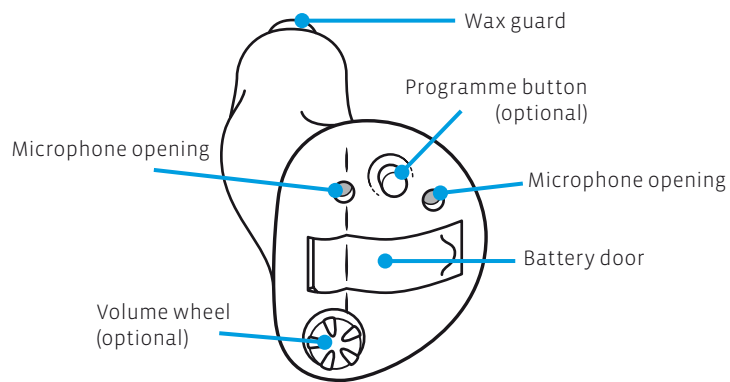
In this booklet you will find instructions for inserting, using and caring for your new hearing instrument.

Contents	page
Your ReSound Essence Hearing Instrument	4
On/Off Function	5
Low Battery Warning	5
Changing the Battery	6
Battery Warning Information	7
Inserting the Instrument	8
Removing the Instrument	9
Recognizing Left & Right instrument	10
Volume Control	11
Programme Selector	12
Your Programme Environments	12
T-programme	13
Directionality	13
Hearing through Induction loop	15
Daily Maintenance	16
Cleaning the Microphone Sound Inlet	16
Repairs	17
Troubleshooting Guide	18-19
General Precautions	20
Technical Data	21
Key Word Index	22

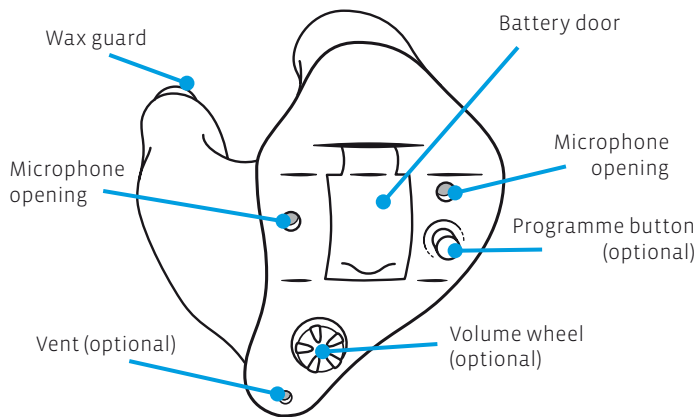
Your ReSound Essence ES10 and ES10-P Hearing Instruments



Your ReSound Essence ES30, ES30-D, ES30-P and ES30-DP Hearing Instruments

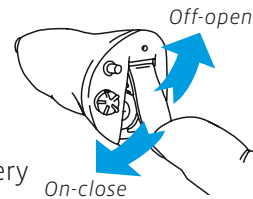


Your ReSound Essence ES50, ES50-D, ES50-P and ES50-DP Hearing Instruments



Turning on and off

Your ReSound Essence custom aid is equipped with an on/off switch integrated into the battery compartment. Turn your hearing instrument on by closing the battery door. Turn your instrument off by opening up the battery door. When first turned on, your hearing instrument will always start in program 1. To read more on this subject, turn to page 12



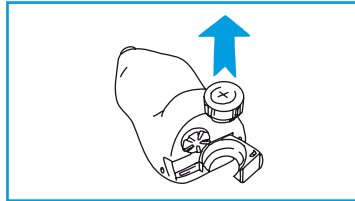
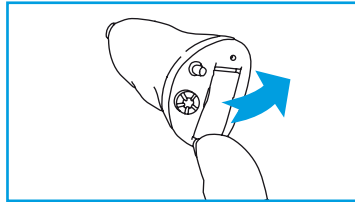
- Turning your instrument off when you are not using it will increase the battery life.
- At night, turn off your instrument and open the battery door completely. It will allow moisture in your instrument to evaporate and will increase the instrument's life span.

Low Battery Warning

The hearing instrument has a soft low-battery-warning signal (beep-beep) that you will hear when the battery voltage/power gets too low. The signal indicates you should replace the battery. We recommend that you always carry a spare battery with you. The battery-warning signal will be repeated every 5-10 minutes until the battery runs out of power. The instrument will then automatically turn off.

Changing the Battery

Open the battery compartment completely, using your fingernail to pull back on the small ridge located at the top of the door. After removing the old battery, insert the new one with the “+” (flat) side facing the “+” on the battery door. Make sure the battery has been placed correctly into the slot.



Please note that if the battery is weak, the hearing instrument performance will be reduced. Removing the battery when you are not wearing the instrument will help prevent corrosion of the battery contacts and prolong battery life.

Battery Warning Information

Batteries contain dangerous substances and should be disposed of carefully in the interest of your safety and for the environment.

- Do NOT attempt to recharge batteries which are not specifically designated rechargeable as they may leak or explode.
- Do NOT attempt to dispose of batteries by burning them.
- Keep batteries away from small children and pets.
- Do NOT place batteries in your mouth.

If swallowed, seek immediate medical attention.

Instrument type

ES10/ES10-P CIC/CIC P

ES30/ES30-D/ES30-P/ES30-DP ITC/ITC-D/ITC-P/ITC-DP

ES50/ES50-D/ES50-P/ES50-DP ITE/ITE-D/ITE-P/ITE-DP

Battery type

10A zinc-air

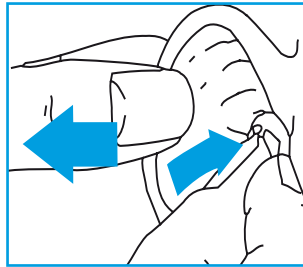
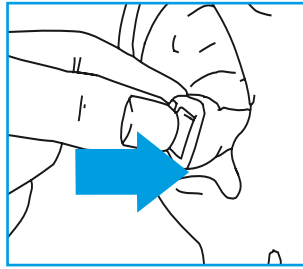
312 zinc-air

13 zinc-air

Inserting your instrument

To insert the hearing instrument into your ear:

1. Grip the instrument with your thumb and forefinger, either above, below or on the sides of the hearing instrument (as shown). The programme button should always be located on the outer top portion of the instrument.
2. Place the sound outlet portion into your ear canal.
3. Insert the hearing instrument carefully with a slight “corkscrew” motion.

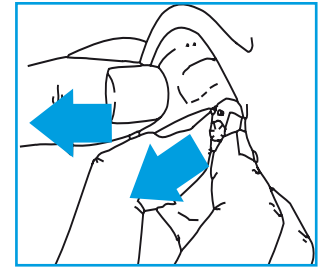


By experimenting, you may find a method that is easier for you. When properly inserted, the instrument should fit comfortably and snugly in your ear. It is important that the custom shell fits correctly into your ear. If your hearing instrument irritates your ear in any way and prevents you from wearing your hearing instrument, please contact your hearing care professional to have the custom shell modified. You should never attempt to modify the shape of the custom shell yourself.

Removing your instrument

To remove the hearing instrument:

1. Gently massage behind your earlobe with an upward and downward motion to dislodge the instrument.
2. Place your thumb on the bottom of the instrument and your forefinger on the top. Carefully remove the instrument from your ear canal with a slight “corkscrew” motion.



By experimenting, you may find a method that is easier for you. Consult your hearing care professional if you have difficulty removing the hearing instrument.

Recognising left and right instrument

Your hearing instrument is custom-made to fit your ear. Therefore, right and left instruments differ in shape.

Your hearing instrument is marked with either a left or right indication:

- A left instrument has a blue wax guard or blue dot;
- A right instrument has a red wax guard or red dot.

This is easy to remember: Red = Right.

The colour dot must point upwards on the CIC instruments when inserted into the ear.

Do not swap your hearing instruments. Please pay attention to this during cleaning, storing, and inserting.

Volume Control

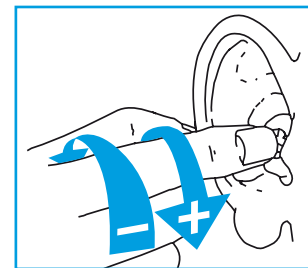
Certain ITE or ITC models are equipped with a volume control that allows you to set and control the volume manually. This option is not available for CIC instruments.

During the fitting of the instrument, your hearing care practitioner will select an optimal volume setting for you. Please note this setting level.

To increase the volume with the instrument fit to your ear, turn the volume control wheel clockwise (towards the front of your head). To reduce the volume, turn the volume control wheel counter-clockwise (towards the back of your head).

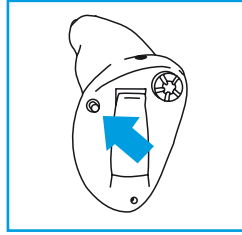
Please note that your instrument has been fit by your hearing care professional and that your hearing loss requires a certain amount of amplification. This will also effect how much you are able to increase the volume on your instrument.

If you prefer not to use the volume wheel your hearing care practitioner can disable it..



Programme Selector

Certain hearing instrument models are equipped with a push button. This enables you to have up to three listening programmes, each of them suitable for different situations. The number of programmes available will vary depending on the model.



If you have an ITE or ITC hearing instrument, your hearing care professional can programme multiple programmes into your instrument. You can select programmes simply by depressing the programme selector once. You will then hear one, two or three "beeps", indicating which programme you have selected. Your hearing instrument will switch programmes as follows:

Examples:

If you have at least 2 programmes: If you are in the default programme, programme 1, press the programme button once to get to programme 2. You will hear 2 beeps when you are in programme 2.

3 programmes: If you are in programme 1, press the programme button twice to get to programme 3. You will hear 3 beeps when you are in programme 3.

To get back to programme 1, press the programme button, until you hear just 1 beep.

You can also get back to programme 1 by turning your instrument off and then on again.

Your Programme Environments

Let your Hearing Care Professional fill out the following table:

No. programme	Programme Type	Description of when to use

T-programme (Telecoil programme)

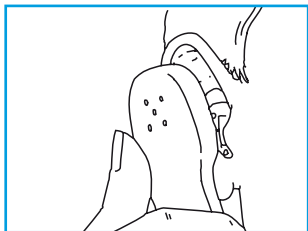
Your hearing instrument might have a built in function, the telecoil, which can enable you to hear better on the telephone and in churches or halls that have an induction loop system installed in them. In order to activate this function, the telecoil programme has to be selected. In this programme you typically will hear no sounds from the microphone, therefore most environmental sounds will be lost. If you wish, your hearing care practitioner can change the setting in such a way that you hear the microphone and the telecoil simultaneously.

Directionality

The ReSound Essence models ES30-D, ES30-DP, ES50-D and ES50-DP are equipped with two microphones and thus offer directionality. The purpose of directionality is to enhance speech understanding in noisy situations. Directionality makes it easier to hear speech in front of you, while sounds coming from the back are suppressed. Please ask your hearing care professional how to activate directionality.

Using the telephone with induction loop.

- Switch your instrument to the telecoil programme.
- Hold your telephone handset behind your ear, close to the hearing instrument (2-3 cm.) and slightly tilt the receiver outwards.
- Listen to the dial tone and move the handset a little to find the position that gives the best reception.
- If necessary, turn the volume up or down.
- When finished using the phone, switch your instrument back to the microphone programme.



If the phone you are using has a poor telecoil signal, or your instrument does not have a telecoil, use program 1 instead. Do not hold the handset too tightly against your ear since this extra period might cause 'whistling'.

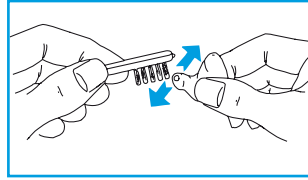
Hearing through an induction loop

Many public places, churches, theatres and cinemas, have induction loop systems. In these particular rooms, the induction loops transmit, wirelessly, the sound of the presenter or show. At home, radio or television can be connected to an induction loop system. Sound quality through an induction loop is often better because noise from the environment is not amplified.

- Switch your instrument to the telecoil programme.
- Choose a good location. Reception is not clear in all locations; it depends on the position of the induction loop. Watch for signs or try moving your seat.
- If necessary, adjust the volume up or down.
- After the service or show, switch your instrument back to standard programme. You will now hear through the microphone again.
- If the sound in the telecoil program is too soft, ask your hearing care practitioner to make an adjustment.
- Your hearing care practitioner will gladly provide you with advice regarding an induction loop system at home. Ask for it.

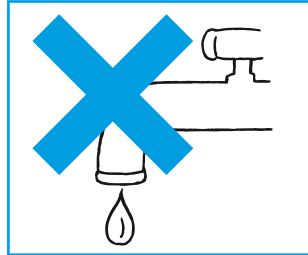
Daily Maintenance

Keep your hearing instrument clean and dry. Wipe the case with a soft cloth/brush or tissue after use to remove oil or moisture. If the instrument has been exposed to high humidity or perspiration, enclose it in a sealed container together with a drying agent (desiccant) overnight. Consult with your hearing care professional regarding which drying agent to use.



To avoid the need for unwarranted repairs:

- Never immerse the instrument in water or other liquids since this may cause permanent damage to the circuitry.
- Protect your hearing instrument from rough handling, and avoid dropping it on hard surfaces or floors.
- Do not leave the instrument in or near direct heat or sunlight since excessive heat can damage the instrument or deform the casing.



Cleaning the Microphone Sound Inlet

For proper function of the microphone, it is important to clean the sound inlet to remove dust, ear wax or other debris. The soft brush, provided with your hearing instrument, can be used for this purpose. Consult your hearing care professional regarding proper use of the tool.

Changing the Sound Outlet Filter/Cleaning the Sound Outlet

Your ReSound Essence hearing instrument may be equipped with a sound outlet filter (consult your hearing care professional). This filter is located at the end of the sound outlet and prevents debris from getting into the hearing instrument. If the hearing instrument seems to have lost power and changing the battery does not help, the filter may be blocked, and need to be changed. Your hearing care professional can instruct you on how to change the filter. If your hearing instrument does not have a filter, ear wax and/or other debris may collect in the sound channel. The cleaning loop, provided with your hearing instrument, can easily be used to remove this material. Your hearing care professional can instruct you on how to properly use this tool. When using this tool, be careful not to damage or pull the tubing placed at the opening of the sound outlet. If this is pulled out, the hearing instrument may need to be returned for repair.

Repairs

If your GN ReSound hearing instrument malfunctions, it must be repaired by a qualified technician. Do not attempt to open the case of the hearing instrument since this would invalidate the warranty. If your GN ReSound hearing instrument requires service, please contact your hearing care professional for assistance.

TROUBLESHOOTING GUIDE

SYMPTOM	CAUSE	POSSIBLE REMEDY
No sound	<ul style="list-style-type: none">• Not turned on• Dead battery• Battery improperly inserted• Blocked sound outlet filter	<ul style="list-style-type: none">• Turn on• Replace battery• Insert battery properly• Change filter or consult your hearing care professional
Not loud enough	<ul style="list-style-type: none">• Loose shell• Change in hearing• Excessive ear wax• Blocked sound outlet filter• Volume set too low	<ul style="list-style-type: none">• Reinsert carefully• Consult your hearing care professional• Consult your physician• Change filter or consult your hearing care professional• Consult your hearing care professional
Whistles	<ul style="list-style-type: none">• Loose shell• DFS needs re-initialization	<ul style="list-style-type: none">• Remove and reinsert• Consult your hearing care professional
Sound not clear or distorted	<ul style="list-style-type: none">• Weak battery• Poorly fitting shell• Hearing instrument damaged• Hearing instrument settings not optimal	<ul style="list-style-type: none">• Replace battery• Consult your hearing care professional• Consult your hearing care professional• Consult your hearing care professional

If you experience additional problems not addressed in this guide, please contact your hearing care professional.

General Precautions

- Consult a physician if you find a foreign object in your ear canal, if you experience skin irritation or if excessive earwax accumulates with the use of the hearing instrument.
- Different types of radiation, e.g. from NMR, MRI or CT scanners, may damage the hearing instrument. Therefore, do not wear the hearing instrument during these or other corresponding scanning procedures. Other types of radiation (burglar alarms, room surveillance systems, radio equipment, mobile telephones, etc) contain less energy and will not damage the hearing instrument. They could however momentarily affect the sound quality or create strange sounds from the hearing instruments.
- Warning: Do not wear the hearing instrument in mines or other explosive areas, unless those areas are certified for hearing instrument use.

Technical Data

Maximum Output (2cc Coupler / IEC 60118-7)

ES10	110 dB SPL (Typical)
ES10-P	116 dB SPL (Typical)
ES30/ES30-D	112 dB SPL (Typical)
ES30-P/ES30-DP	120 dB SPL (Typical)
ES50/ES50-D	120 dB SPL (Typical)
ES50-P/ES50-DP	125 dB SPL (Typical)

Key Word Index

Battery change	5, 6, 18, 19
Battery compartment	5, 6
Cleaning the instrument	10, 16
Environmental programmes	12
Low battery warning	5, 7
Maintenance	15
On/off switch	5
Precautions	20
Programme Selector	8, 12
Technical data	20
Telecoil use	13, 14
Telephone use	13, 17
Troubleshooting guide	18, 19
Volume control	11, 14, 18



Please ask your local hearing care professional concerning disposal of your hearing instrument

CE
0 2 9 7

Faceplate/Electronics by: GN ReSound A/S

Any issues relating to the EU Medical Device Directive 93/42/EEC should be directed to GN ReSound A/S.

Worldwide Headquarters

GN ReSound A/S
Lautrupbjerg 7
DK-2750 Ballerup, Denmark
Tel.: +45 45 75 11 11
Fax: +45 45 75 11 19
www.resound.com

United Kingdom

GN ReSound Ltd.
1 Landscape Close
Weston Business Park
Weston-on-the-Green
Oxon OX25 3SX
Tel.: 0 1869 343 500
Fax: 0 1869 343 466
www.gnresound.co.uk

Australia

GN ReSound Pty. Ltd.
Unit R1 Regent Park Estate
391 Park Road
Regent Park NSW 2143
Tel.: (free) 1800 658 955
Fax: 02 9743 7472
www.gnresound.com.au

New Zealand

GN ReSound (NZ) Ltd.
12 Parkway Drive
Mairangi Bay
Auckland
Tel.: (free) 0800 900 126
Fax: (free) 0800 007 695
www.gnresound.co.nz

16715400-GB-08.10 Rev.B

ReSound
Essence™
Simply surprising