



ReSound GN

Quick guide

ReSound LiNX 3D™ MIH

GN Making Life Sound Better

My hearing aid information

Product: ReSound LiNX 3D

Model: MIH

Serial number (R):

Serial number (L):

Battery size: 312 or 13

Programs:

(if set up by your hearing care professional)

PROGRAM	WHEN TO USE	BEEPS
1		1
2		2
3		3
4		4

Volume control (C):

(if set up by your hearing care professional)

ACTION	RESULT
Rotate forward (toward your face)	Volume increases
Rotate backward (away from your face)	Volume decreases

Get to know your hearing aid

A. Microphone

B. Battery door

C. Program button (optional)

D. Retrieval line

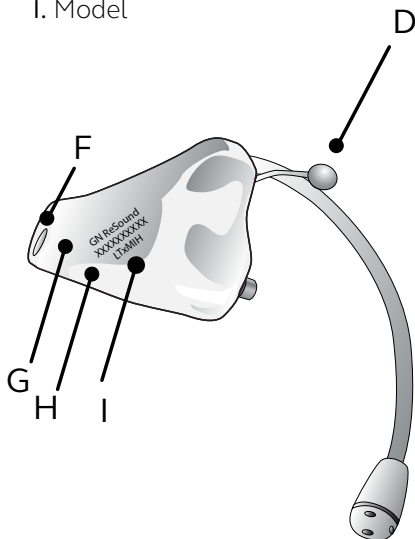
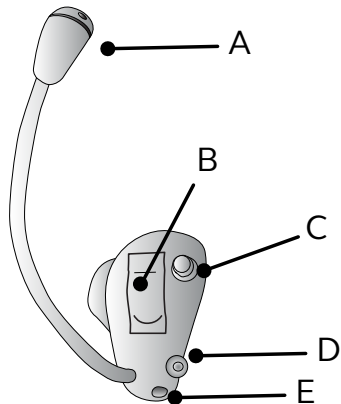
E. Vent

F. Wax guard

G. Manufacturer

H. Serial number

I. Model



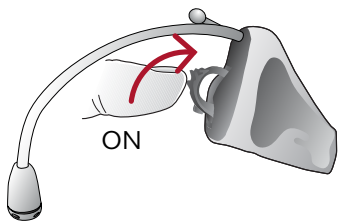
View ReSound hearing aid tutorial videos at youtube.com/resoundus.

What you need to know

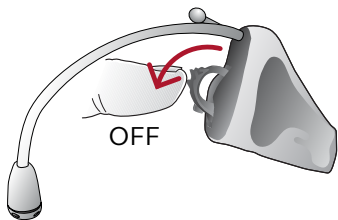
Getting started: On/Off function

ON: Insert battery & completely close battery door (B).

Program 1 will be active.

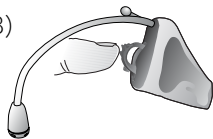


OFF: Open the battery door (B).
Use fingertip to pull it all the way.



Inserting/Replacing the battery:

1. Open the battery door (B) completely by using your fingertip.



2. Remove protective sticker from battery and wait 2 minutes before inserting the battery into the hearing aid to allow full activation of the battery.



3. Insert the new battery with the positive side (flat side) in the correct position, as shown.

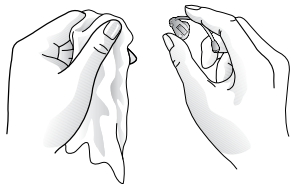


4. Gently close the battery door (B).
If it doesn't close easily, check to see if the battery is upside down.

Regular care & maintenance

Daily: Clean your hearing aid.

Keep your hearing aids dry. Clean the hearing aids using a soft cloth or tissue.



Monthly: Change the wax guard (F) or see your hearing care professional.

For changing CeruSTOP™ (white) wax guards, complete the following steps:

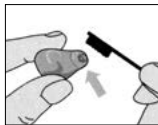
Removal: Insert the removal side of the wax guard tool into the used wax guard so that the shaft of the tool is touching the rim of the wax guard. Slowly pull the wax guard straight out.



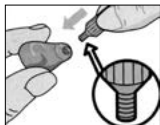
Insertion: To insert the new wax guard, gently press the replacement side of the wax guard tool straight into the hole of the sound outlet until the outer ring lies flush with the outside of the receiver. Pull the tool straight out. The new wax guard will remain in place.

For changing HF3 wax guard (F), complete the following steps:

1. Brush the sound outlet area with the sound outlet pointed down.



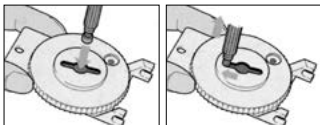
2. Insert the threaded end of the wax guard tool into the used wax guard, and rotate clockwise.



3. Gently pull until the used guard is removed.

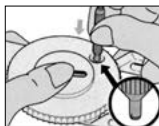


4. Discard the used guard in the slot located

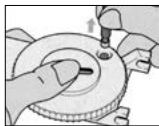


in the wax guard kit by pressing it into the center, sliding it to one end of the slot, and pull until the filter is discarded.

5. Flip the wax guard tool around, locate a new guard in the dial, and press the tip of the tool into the center of the dial.



6. Gently pull the new filter out of the dial.



7. Press the new guard to the canal tip of the hearing aid. Move the tool gently side to side and pull it away from the hearing aid.



For more information

Refer to the user guide included in your hearing aid box.

Your hearing care professional can be reached at:

View ReSound hearing aid tutorial videos at youtube.com/resoundus.

Manufacturer according to FDA:

ReSound North America

8001 E. Bloomington Freeway
Bloomington, MN 55420
1.888.735.4327
[resound.com](https://www.resound.com)

Manufacturer according to Health Canada:

ReSound Canada

303 Supertest Road
Toronto, Ontario M3J 2M4
1.888.737.6863
[resound.com](https://www.resound.com)

ReSound Government Services

8001 E. Bloomington Freeway
Bloomington, MN 55420
1.800.392.9932
www.resound.com/veterans



400707011

400707011 Rev A 2017.02

Troubleshooting

SYMPTOM	CAUSE	POSSIBLE REMEDY
No sound	Battery door not closed	Turn on by closing the battery door (B)
	Dead battery	Replace battery
	Battery door will not close	Insert battery properly
	Blocked wax guard	Replace wax guard (F) or consult your hearing care professional
Not loud enough	Blocked sound outlet	Change wax guard (F) or consult your hearing professional
	Change in hearing, volume too low	Consult your hearing care professional
	Excessive ear wax	Consult your hearing care professional
Excessive whistling/ feedback	Incorrect placement in ear	Re-insert hearing aid carefully
	Excessive ear wax	Clean guard/consult your hearing care professional
	If none of the above	Consult your hearing care professional

If there are any other problems not mentioned in this guide, please contact ReSound or your hearing care professional.

View ReSound hearing aid tutorial videos at youtube.com/resoundus.